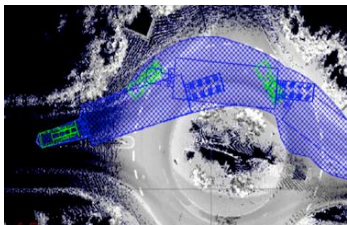
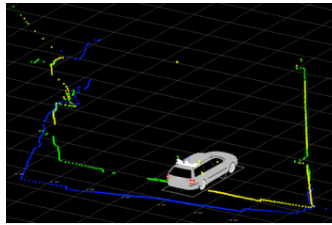


3D Laser Route Planning for *Rapid and Precise Heavy Cargo Transport*

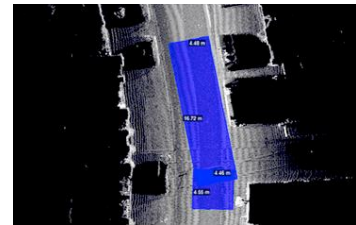
Traditionally, the transportation by road of heavy and oversized cargo has been a complex undertaking. Such transports require many man hours to select potential routes, conduct field surveys to identify obstacles and to develop precise plans to safely transport cargo along public roads and through often densely populated areas. With 3D Route Scan technology, what normally takes days to measure and analyze can now be done within a few hours.



Analysis of transport path clearances

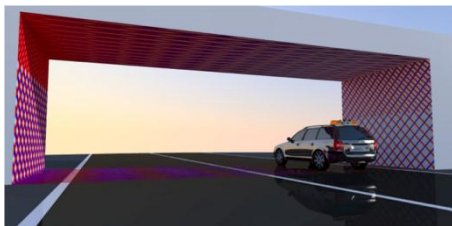


3D Spatial Analysis

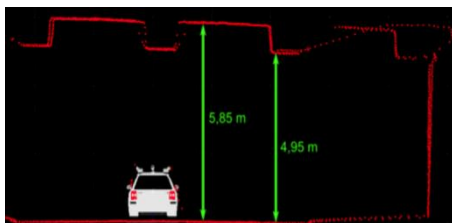


Accurate simulation of vehicle clearance

Using the latest in infrared laser range finding technology, RollBo's heavy goods team can quickly and to millimeter accuracy develop a precise transport plan that measures and accounts for every turn, tree, building and bridge. Using 3D Route Scan technology, RollBo can create a complete picture of a potential route that includes precise placement of every potential object along a route.



Sophisticated 3D infrared laser range finder technology precisely measures and models bridges, over passes and tunnels to provide a highly accurate picture of intended transport routes.



Using a vehicle fitted with the 3D laser range finding package, the entire survey process can be undertaken with just one drive along the proposed route.

For more information about RollBo and our 3D Route Scanning Service:

Contact Artur Penkala on +49 40 21008 121 or by email at penkala@rollbo.de

RollBo is a high performance, high quality logistics provider based in the Port of Hamburg, PrimoCargo is certified under the Authorized Economic Operator (AEO) program, our facilities are approved as Type C Customs Warehouses, and ISO 9001 and ISO 14001 certified.

www.rollbo.de

Rossweg 20, 20457 Hamburg | PO Box 26 18 65, 20508 Hamburg